

---

# WMM Research Panel Book

09/2023



## ABOUT WMM

---

**WMM** IS A MARKET RESEARCH FIELDWORK AND CONSULTANCY AGENCY WITH  
INTERNATIONAL PORTFOLIO, SPECIALIZING IN QUALITATIVE PROJECTS

From our base in Hamburg, WMM has been providing worldwide turnkey qualitative research services for national and international companies since 2004. WMM also has the largest qualitative panel in Germany with over 142.418+++ respondents; which is growing each year thanks to our proprietary App, social media, and in-person team outreach effort.

## WMM QUALITATIVE PANEL

# WMM has one of the largest qualitative panels in the industry, delivering meaningful insights for accurate and effective decision making.

Our panel is comprised of a large quantity of vetted respondents that are compensated fairly and are engaged professionally throughout their participation. A well-managed, well-nurtured panel contributes to high-fidelity insights and allows us to cultivate trustworthy and reliable relationships. **Advancing the industry norm, the WMM core team personally vet each respondents according to study requirements; optimizing project management and ensuring authenticity.**



Unique recruiting approach



Profile verified by personal contact



In-depth project specific profiling



Continuous feedback loop with respondents



Project experience with diverse target groups

# WMM QUALITATIVE PANEL

**142.418+**

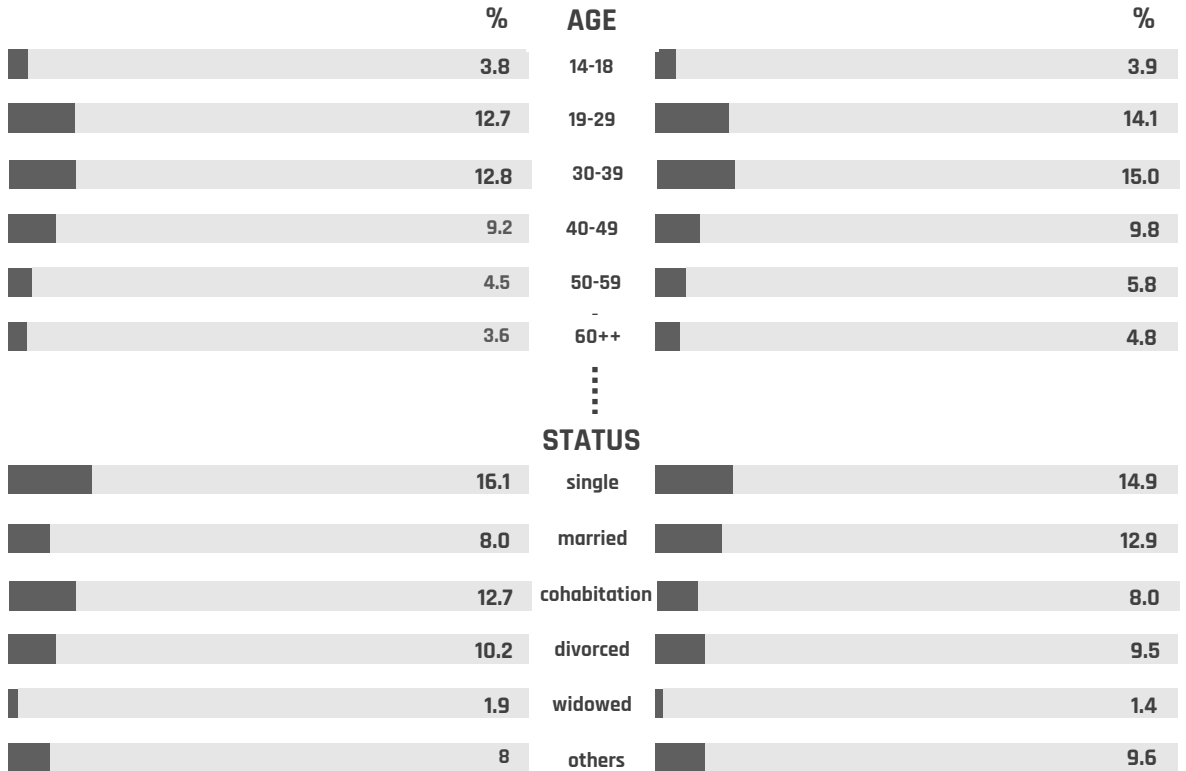
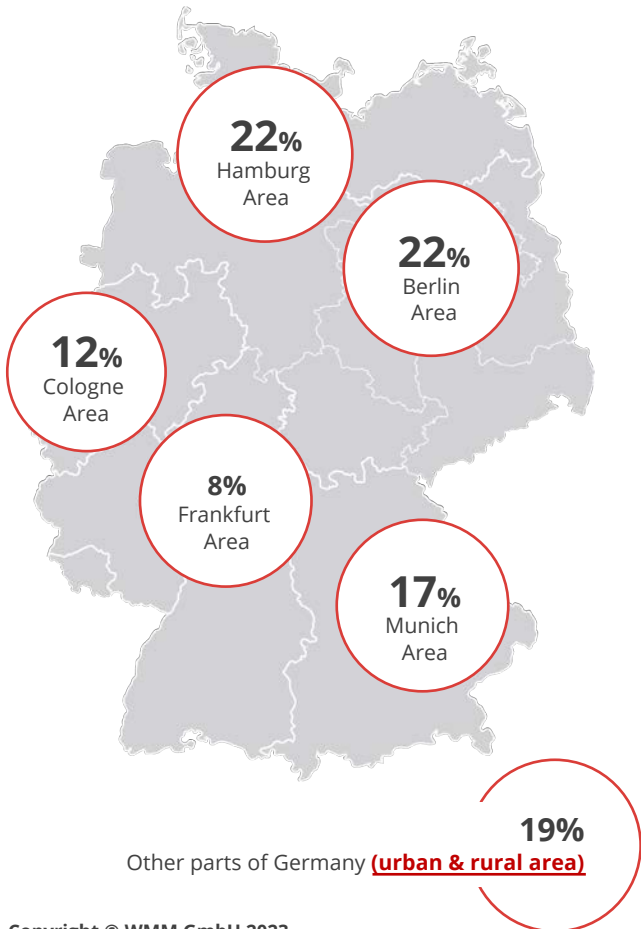
Respondents in Germany



**46%** Male

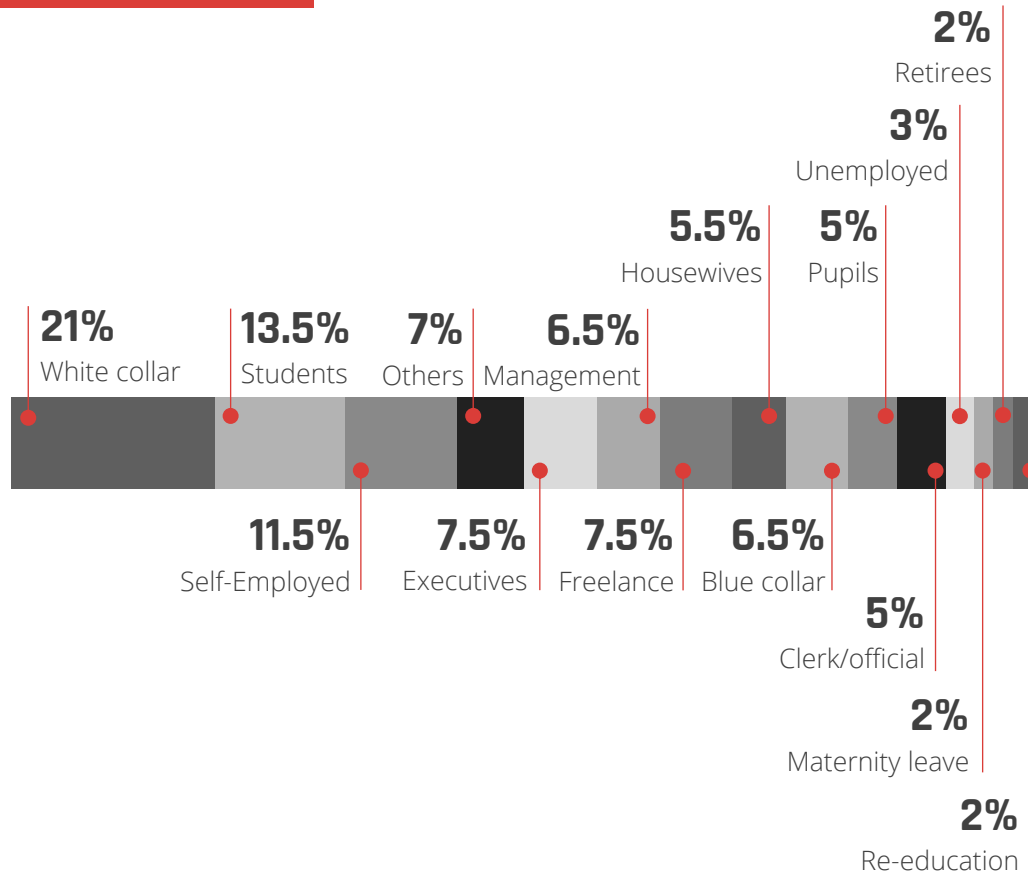


**54%** Female



## WMM PANEL DATA

## Occupations



## Key Metric Examples



37%

Uses tablet PC



56%

Owns an automobile

13%



Drives electric vehicle



31%

Uses car sharing services



67%

Uses Online Banking

23%

Use a smart watch



9.8%



Are property owners



21%

Owns a pet or two



5.4%

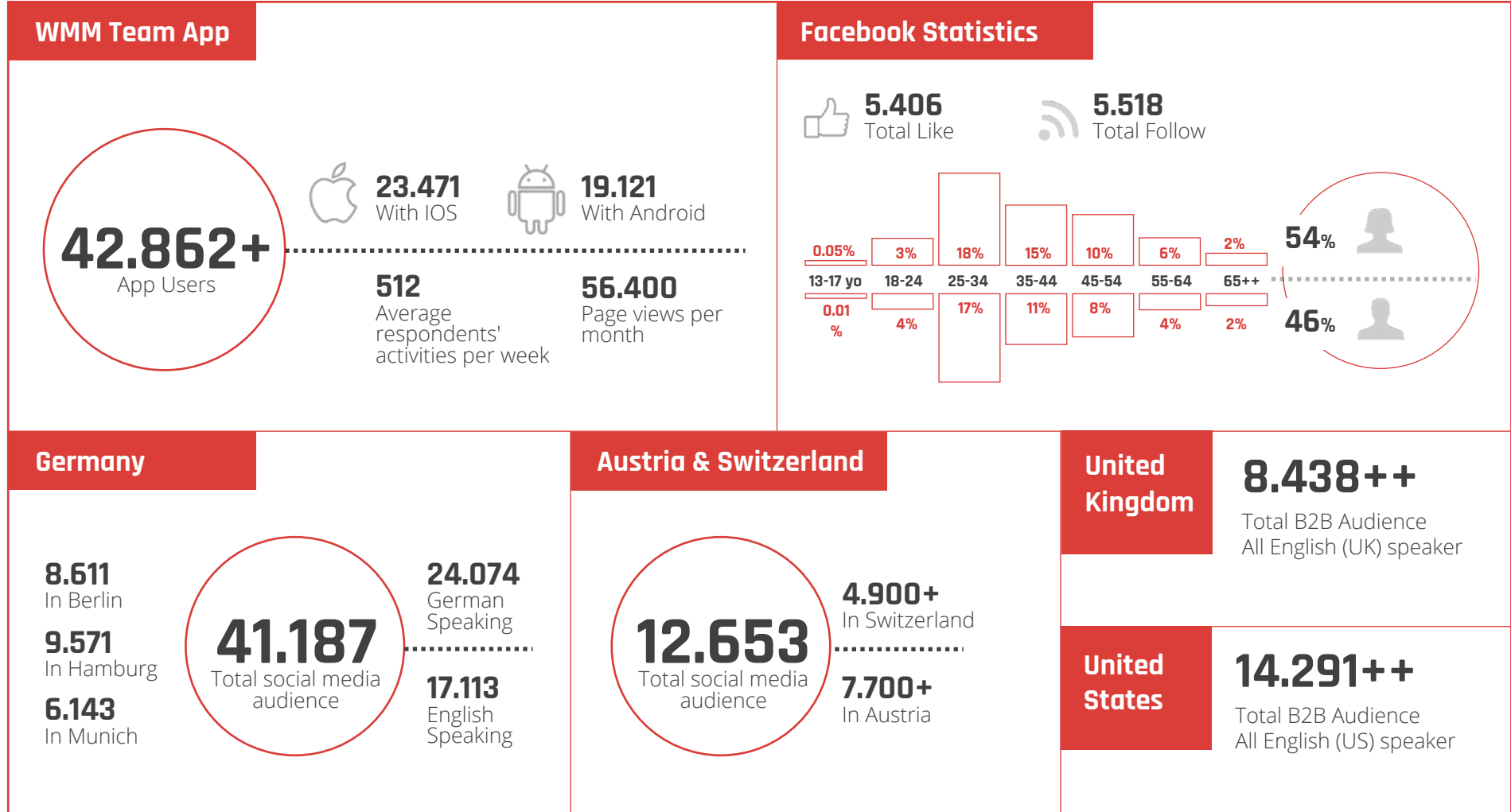
Have Diabetes



17.5%

Are cruise travelers

# WMM SOCIAL MEDIA REACH



## WMM | Weber Marketing- & Marktforschung GmbH

Humboldtstrasse 53-55, Haus B  
22083 Hamburg, Germany

T.: +49 40 226 227 630  
E.: [info@wmm.de](mailto:info@wmm.de)  
U.: [www.wmm.de](http://www.wmm.de)

**Managing Director:** Thorsten Weber  
Local Court Hamburg  
Hamburg Trade Register  
HRB 123245

Value added tax identification number according to § 27a VAT law:  
DE235921137